

PRX-T₃₃[®]

WiQO

COMBINED WITH CARBOXYTHERAPY



PROTOCOL FOR USE

ADVANTAGES

Carboxytherapy's double mechanism of action (biochemical on micro-circulation and mechanical detachment) combines particularly well with the action of PRX-T₃₃. This combined treatment can also be used in summer and is very popular among patients.

DIRECTIONS

- 1) Cleanse the area to be treated.
- 2) Apply one layer of PRX-T₃₃.
- 3) Infuse CO₂ on a superficial and/or deep plane according to the area and the indication being treated following carboxytherapy protocols.
- 4) Apply two layers of PRX-T₃₃ – this will assist in spreading the CO₂.
- 5) Rinse with water, dry well and apply WiQO NOURISHING AND MOISTURIZING CREAM DRY SKIN FACE as an immediate post-treatment.

TREATMENT SCHEDULE AND POST-TREATMENT

BODY

5-10 weekly combined sessions. At home: WiQo FIRMING ANTI-DRYING BODY CREAM.

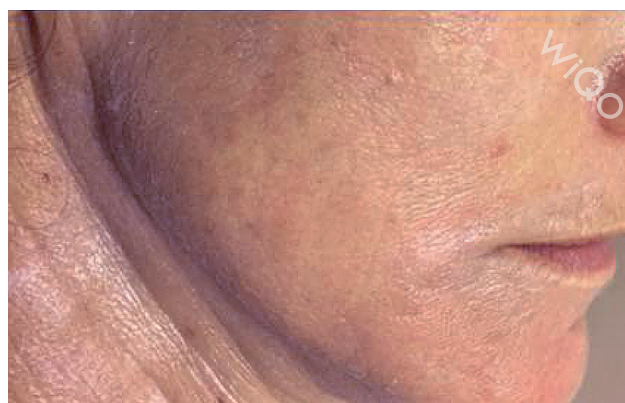
EYE CONTOUR

Three combined sessions, 15 days apart (superficial CO₂ infusion). At home: WiQo EYE CONTOUR AND FACIAL SERUM FOR DELICATE SKIN.

BEFORE



AFTER



COURTESY D.SSA MARIA GABRIELLA DI RUSSO

Direct line with researching dermatologists and biologists for scientific questions, or enquiries regarding outpatient treatment:
scientificdiv.gpq@wiqo.eu

WiQO[®]
a GPQ brand

GPQ srl

Operational Headquarters: Via Martinelli, 16 – 34015 Muggia (Trieste) - Italy
Phone: +39 040 360408 - Fax: +39 040 761393 - gpq@wiqo.eu
www.wiqo.com